

Motor driven continuous gear pump

ACM-II . AMI-300 . AMI-1000

Model Reference

ACM-II
AMI-300
AMI-1000

Voltage

1	AC100V φ1
2	AC200V φ3
3	AC200V φ3 With needle valve

*AC200V φ3 Needle valve available only with AMI-1000

Reservoir capacity

30	3ℓ Metal reservoirs
40	4ℓ Metal reservoirs
80	8ℓ Metal reservoirs

Oil level switch

Blank	Without
L	With

Reservoir Mounting Position

Blank	Resin reservoirs
F	Foot mount
B	Wall mount

Reservoir Mounting Position

L	Pump position-Left
R	Pump Position-Right



[ACM-II]



[AMI-300]



[AMI-1000]

Model

Model	Part Number
ACM-II-1	102484
ACM-II-2	102486

* Should the pump malfunction, contact LUBE for consultation.

Specifications

		ACM-II	AMI-300	AMI-1000
Pump	Discharge volume	60mℓ/min (50Hz) 70mℓ/min (60Hz)	300mℓ/min (50Hz) 330mℓ/min (60Hz)	1000mℓ/min (50Hz) 1100mℓ/min (60Hz)
	Discharge pressure	0.8MPa (safety valve setting)	0.5MPa (safety valve setting)	1.2MPa (safety valve setting)
Motor (Other voltages available.)	Voltage / Current	AC100Vφ1/0.51/0.52A (Condenser: 8μF) AC200Vφ3/0.23/0.21A	AC100Vφ1/0.76/0.74A (Condenser: 11μF) AC200Vφ3/0.32A/0.3A	AC100Vφ1/1.2/1.19A (Condenser: 20μF) AC200Vφ3/0.50/0.43A
	Output	25W Induction motor	40W Induction motor	60W Induction motor
Operation rate		Continuous		
Working viscosity range		32-1300mm ² /s	65-1300mm ² /s	
Reservoir capacity		2ℓ, 3ℓ, 4ℓ, 8ℓ (sheet metal)		
Weight		4.0kg	4.4kg	7.1kg
Other		Motor rotary direction: Counter- clockwise	Motor rotary direction: Clockwise	Motor rotary direction: Counter- clockwise
External fuse		100V/1A 200V/0.5A	100V/2A 200V/1A	100V/3A 200V/1A

Directions for use

- Oil viscosity varies with oil temperature. Be sure to use oil within the working viscosity range. Refer to the viscosity table. (P.237)
- Do not use any oil containing special additives, water soluble oil, or solvent.
- Periodically check the oil in the reservoir for impurities. Replace with fresh oil immediately, if necessary. Be sure to clean the reservoir before oil adding new oil.
- Do not over tighten the discharge joint. Refer to the tightening torque table. (P.251)
- Make sure that proper voltage and pressure are proper.
- Replace the suction filter at least once a year.

Related parts



Flow unit
: P.149



control unit
: P.161



PJ junction
: P.164



Tubing
: P.203



Pressure gauge
: P.184



Filter FX1
: P.181



Filter FY20
: P.181



Pressure switch
: P.185



Compression parts
: P.201



Adapters
: P.207

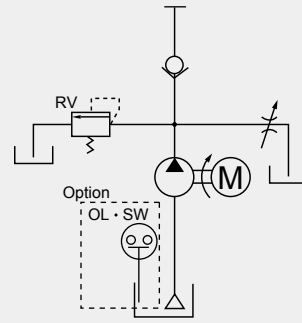


Reservoir
: P.174

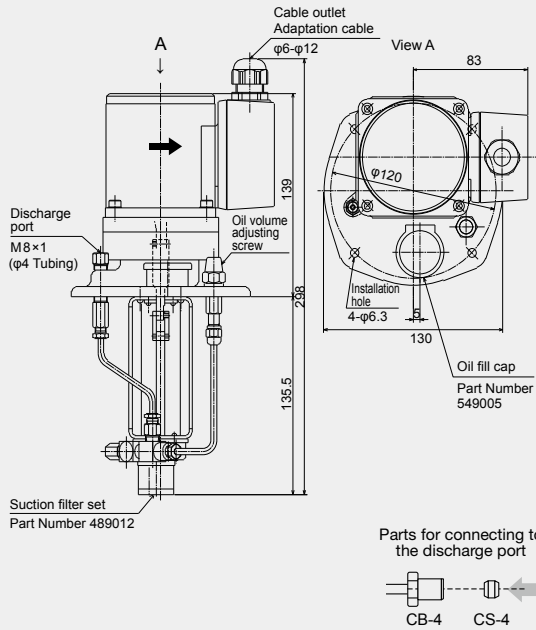


AMI-300 with 3L reservoir and low level switch

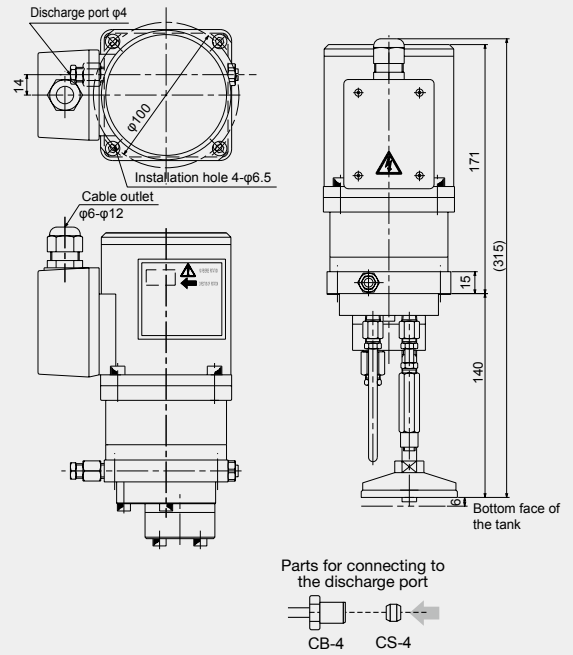
Hydraulic circuit drawing



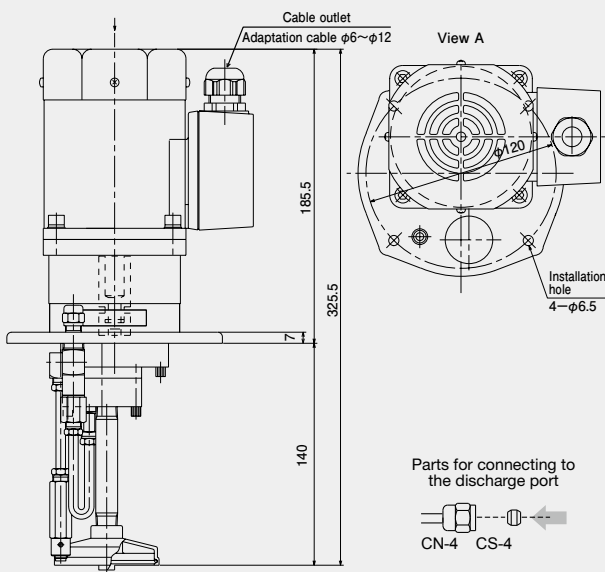
Dimensional drawing



[ACM-II]

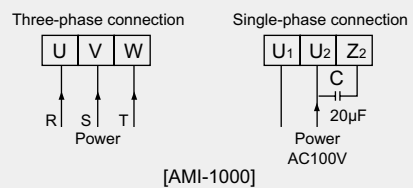
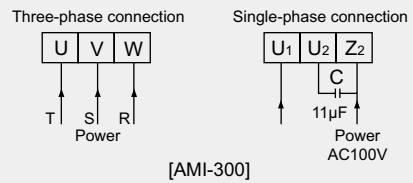
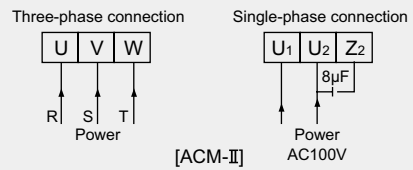


[AMI-300]



[AMI-1000]

Wiring diagram



⚠ Improper handling can result in a death or serious injury



Electrical shock may be received under certain conditions



Be sure to ground.

SLB Single-Line Resistance compact 3V-5V
for small machines to large machines
with continuous (recirculation) delivery