

Automatic intermittent gear pump

AMZ - III [CE]

Lightweight and compact pump unit without controller. Conforms to European Safety Standard. Oil level and pressure switches are standard equipment.

Model Reference

AMZ - III - [] - [] - []

Voltage	
1	AC100Vφ1
2	AC200Vφ1
23	AC230Vφ1

Reservoir Mounting Position	
Blank	Resin
F	Foot Mount
B	Wall Mount

*Metal reservoir only

Reservoir capacity	
Blank	1.8ℓ Resin reservoirs
3	3ℓ Resin reservoirs
30	3ℓ Metal reservoirs
40	4ℓ Metal reservoirs
80	8ℓ Metal reservoirs

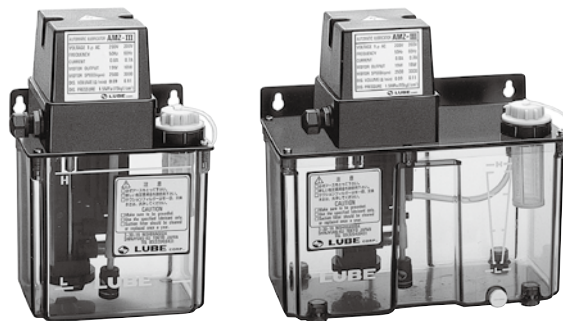
*Pump is installed on the right side, if a metal reservoir is selected.

Model

Model	Part Number
AMZ-III-1	285017
AMZ-III-1-3	285024
AMZ-III-2	285016
AMZ-III-2-3	285023
AMZ-III-23	285433

Low viscosity oil pump (On the page of AMZ-III)

No	Model	Part No.	Voltage	Tank capacity	Working viscosity range
1	AMZ-3-100SL-18LP	285224	100V	1.8L	22~800mm ² /S
2	AMZ-3-100SL-18LP	285426	200V	1.8L	22~800mm ² /S



[1.8ℓ]

[3ℓ]

Specifications

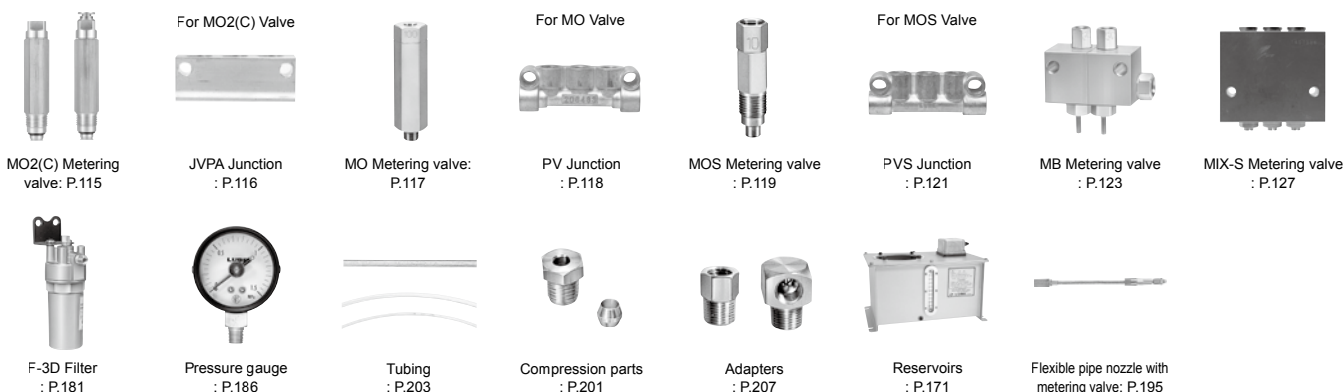
Pump	Discharge volume	90mℓ/min (50Hz), 110mℓ/min (60Hz)
	Discharge pressure	1.5MPa/217.5psi (safety valve set pressure)
Motor	Voltage / current	AC100Vφ1/1.5A, AC200Vφ1/0.8A (50Hz) AC100Vφ1/1.3A, AC200Vφ1/0.7A (60Hz)
	Output	19W (50Hz), 18W (60Hz) Shading motor
Emergency detection	Oil level switch	Contact type (NO) ON at low level Contact capacity 0.5A, AC DC200V/30W smaller
	Pressure switch	Contact type (NO) Operating pressure: 1.3M ON Reset pressure: 0.9MPa OFF Contact capacity AC DC250V/2A
Operation	Max. discharge time: 1 min. Min. interval time: 3 min.	
Working viscosity range	50-1300mm ² /S (50Hz)	
Reservoir capacity	1.8ℓ, 3ℓ (plastic) 3ℓ, 4ℓ, 8ℓ (sheet metal)	
Weight	1.8ℓ: 2.7kg 3ℓ: 3.6kg	
External fuse	100V/2.0A, 200V/1.0A	

* Should the pump malfunction, contact LUBE for consultation.

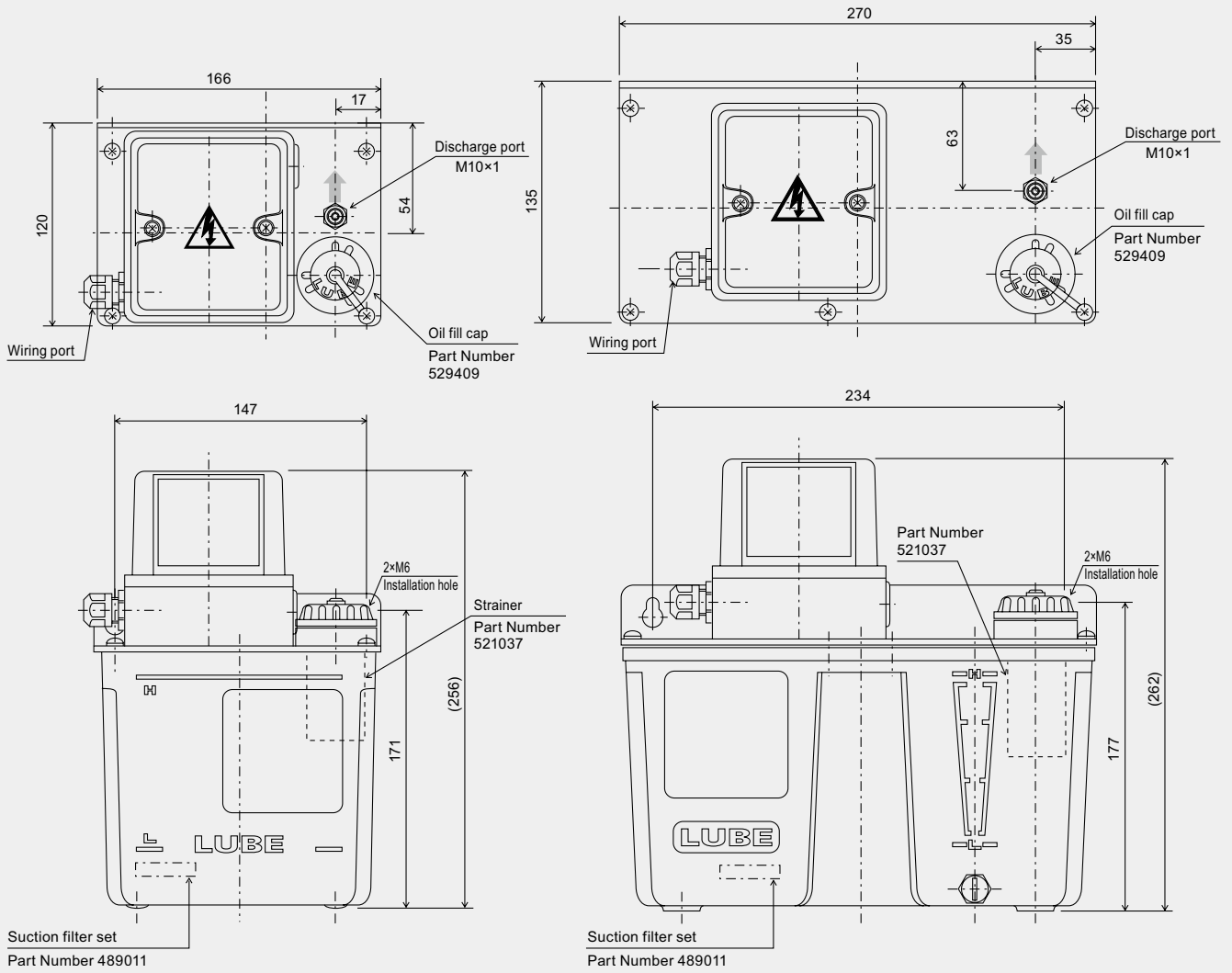
Directions for use

- This pump unit requires a separate control circuit to operate.
- Do not remove the oil fill strainer in order to keep the pump clear of foreign matter.
- Replace the suction filter at least once a year.
- Oil viscosity varies with oil temperature. Be sure to use oil within the working viscosity range. Refer to the viscosity table. (P.237)
- Do not use any special additive-contained oil, water soluble oil, or solvent.
- Periodically check the oil in the reservoir for impurities. Replace it, if necessary, with fresh oil immediately. Be sure to clean the reservoir before replacing oil.
- Make sure that proper voltage is applied.
- Do not over tighten the discharge joint.
- Refer to the torque table. (P. 251)
- Low-oil viscosity versions are available. Contact us for information.

Related parts



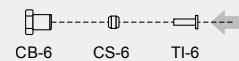
Dimensional drawing



[1.8ℓ]

[3ℓ]

Parts for connecting to the discharge port

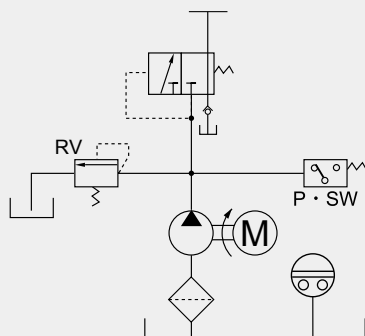


Improper handling can result in a death or serious injury

Electrical shock may be received under certain conditions

Be sure to ground.

Hydraulic circuit drawing



Wiring diagram

