

Pneumatic piston pump

PM-8S

Pneumatically actuated piston pump for use with positive displacement injectors.



[PM-8S]

HOW to order

PM-8S-□-□□

Oil level switch

Blank	Blank
L	With (A contact)

Reservoir Mounting Position

Blank	1.8ℓ Resin
F	Foot Mount
B	Wall Mount

※Metal reservoir only

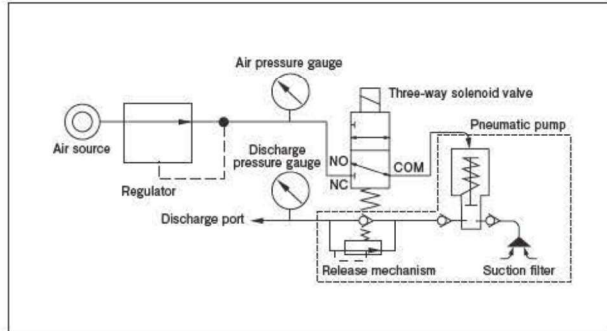
Reservoir capacity

Blank	1.8ℓ Resin reservoirs
3	3ℓ Resin reservoirs
30	3ℓ Metal reservoirs
40	4ℓ Metal reservoirs
80	8ℓ Metal reservoirs

※1

※Pump is installed on the right side, if a metal reservoir is selected.
 ※Specify the pump location (right or left) if 13L reservoir is.

Hydraulic circuit drawing



Specifications

Pump ratio	1:5 (under air pressure of 0.5MPa)	
Discharge volume	8mℓ/shot (6mℓ, 7mℓ: Available on order)	
Working viscosity	Spray method: Oil shot 10~100cSt Oil/air 10~1800cSt Contact us when a special lubricant is used.	
Air pressure vs. air consumption	0.4MPa - 0.27NI/shot; 0.5MPa - 0.3NI/shot Total valve discharge: Approx. 5mℓ	
Spray amount	When using 0.5mℓ valve, lubrication points can be up to 10 points.	
Reservoir capacity	1.8ℓ, 3ℓ resin reservoir (standard) 3ℓ resin reservoir, 3ℓ, 4ℓ, 8ℓ metal reservoir (optional)	
Option	3-way solenoid valve	Voltage: AC100V, AC200V, DC24V
	Oil level switch	A contact (NO) ON at low level
	Contact capacity	AC, DC200V 30W or resistance load 0.5A, whichever smaller
Weight	1.8ℓ reservoir: 1.2 kg, 8ℓ reservoir: 11.0kg	

● Related parts

MO2(C) Metering valve : P.105	JVPA Junction : P.106	MO Metering valve : P.107	PV Junction : P.108	MOS Metering valve : P.109	PVS Junction : P.109	MIX · MIX-A Metering valve : P.113	F-3D Filter : P.159
Pressure gauge : P.162	Tubing : P.171	Compression parts : P.169	Adapters : P.175	Reservoirs : P.148			