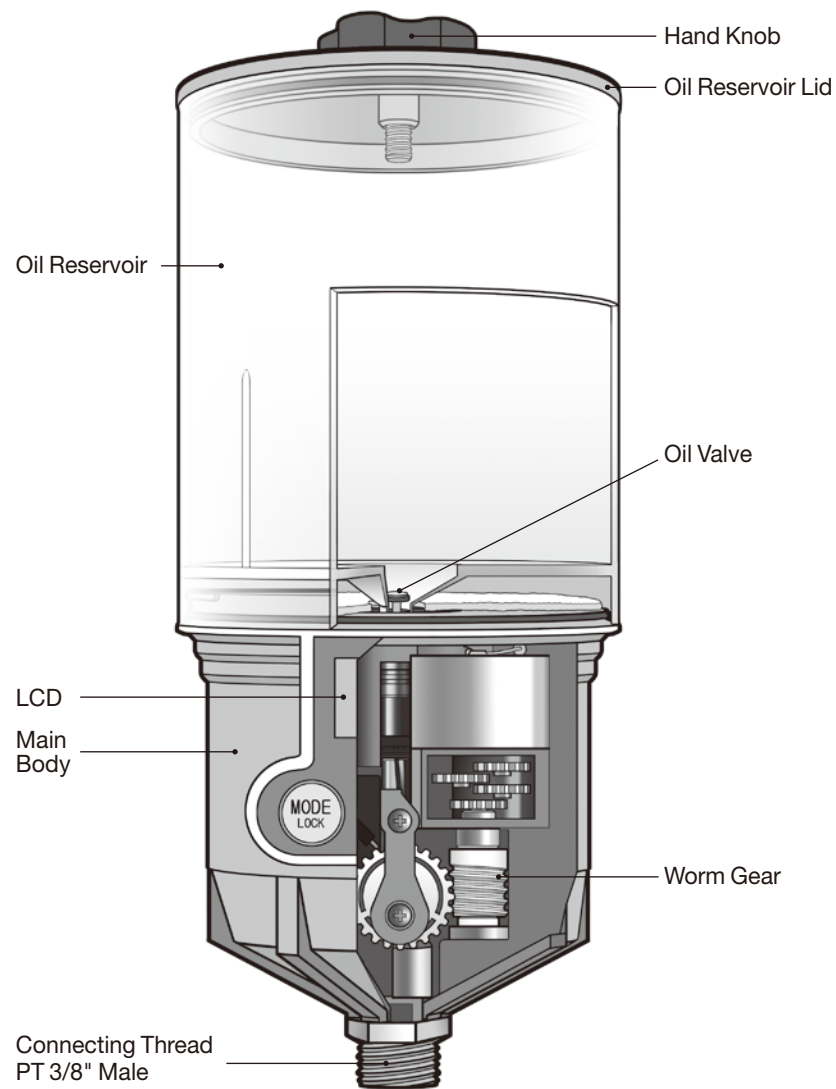
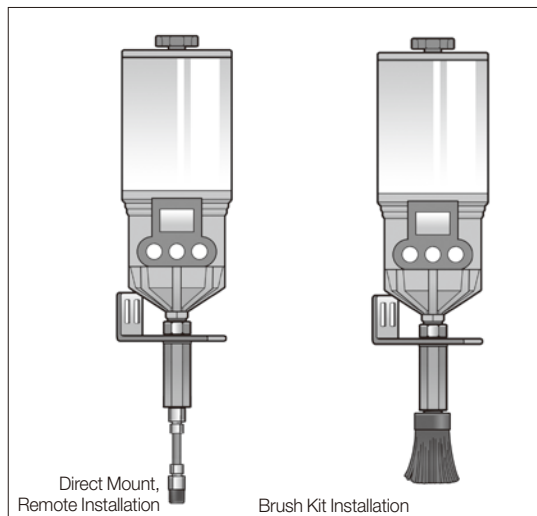


Product Details



Installation Guidelines

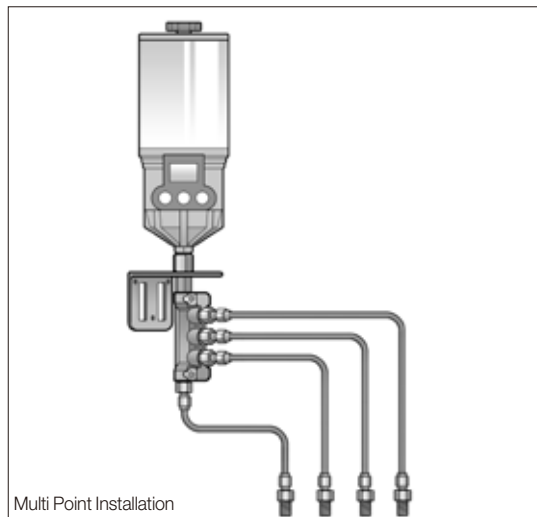


A. Single Point Installation using Brush Kit

Install appropriate accessories and brush kits.

Note

For a complete list of available accessories, refer to the list on the back labeled Accessories for Oil Lubrication.



B. Multi Point Installation using Multi Point Installation Kit

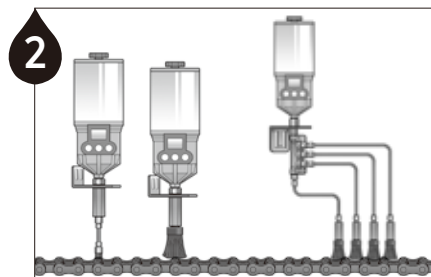
Available up to 4 points using oil distributor. (Select the appropriate 1250RO multi-point kit)

Note

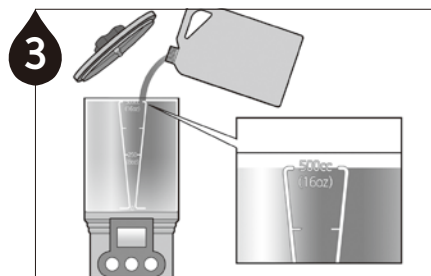
Mount the Pulsarube OL500 unit in close proximity to the application to keep feed lines as short as possible.



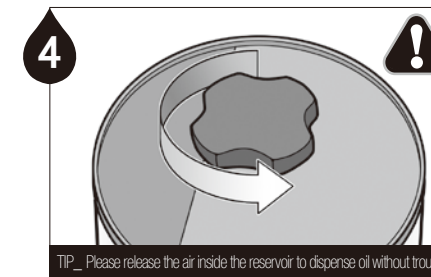
1 Remove the oil reservoir and check that the battery is properly installed.



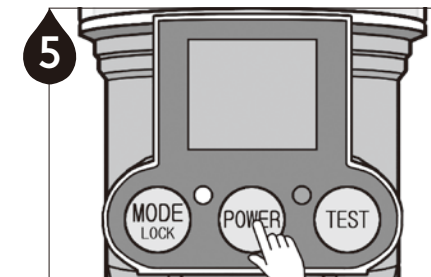
2 Install the appropriate accessories for the selected installation method. Refer to the user manual included with your single/multi point installation kit or brush and bracket kit.



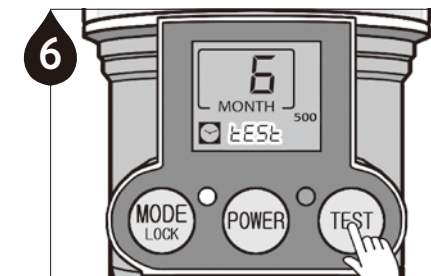
3 Remove the oil reservoir lid and fill the reservoir with oil to the 500ml level.



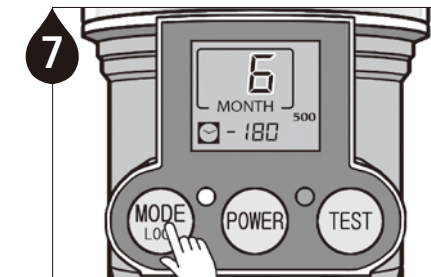
4 Turn the hand knob counter clockwise 1~2 turns before closing the lid to open the vent and relieve vacuum pressure.
TIP_ Please release the air inside the reservoir to dispense oil without trouble.



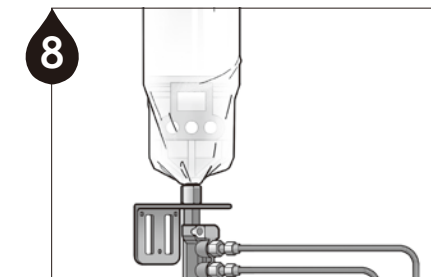
5 Press the POWER button for 2 seconds to turn on the unit.



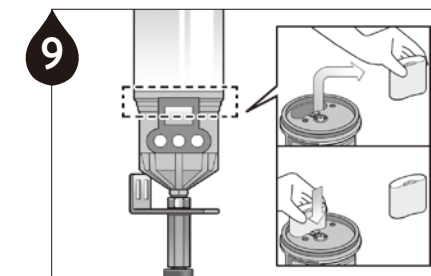
6 Press the TEST button for 2 seconds to run a test cycle and check for proper operation of the unit. Oil will dispense during the test cycle.



7 Press the MODE button to program the dispensing period.

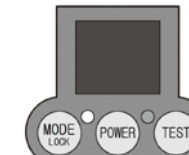


8 Use the included transparent dust cover to protect the unit from contamination.

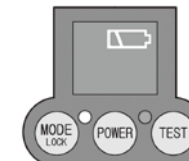


9 The Pulsarube OL500 is a reusable unit but the battery pack must be replaced when each dispensing period set is complete. After installing a new battery, reset the unit and repeat the previous steps.

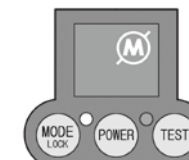
Troubleshooting Guidelines



Symptom : Blank LCD screen
Possible Cause : Electrical malfunction of CPU or circuitry, battery problem
Solution : Replace battery pack or press reset button to restart the lubricator. If the problem persists, contact your supplier.



Symptom : Low Battery Indication
Possible Cause : Rapid power consumption due to improper storage or harsh operating conditions (temperature, humidity, or high backpressure).
Solution : Store the battery pack in cool, dry place and choose proper battery type for application. Optional lithium battery pack is available for more advanced applications.



Symptom : Excessive Backpressure Indication
Possible Cause : Excessive backpressure due to over-oil lubrication, ruptured lube line, long distance remote installation, etc.
Solution : A) Check backpressure at lube point and/or lube line, B) check oil dispensing rate, C) reduce remote installation distance.

Button Operation

MODE LOCK

Dispensing Period

Press to set dispensing period
1, 2, 4, 6, 12, 18, 24 month & 15 days (H)

Automatic Lock Out Mode

Press for 2 seconds to unlock (🔒)

POWER

Power ON/OFF

Press to Power unit On or Off

TEST

TEST Mode

ON : Press for 2 seconds
OFF : Short press of button
(will stop after completion of ongoing cycle)

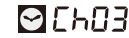
RESET

Reset to default setting when the unit malfunctions and/or after changing the Service Pack

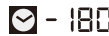
LCD Display



Dispensing period setting



Number of days operation has been on hold due to excessive backpressure



Remaining dispensing days



Low battery power



Automatic Lock Out mode



Operation on hold due to excessive backpressure

500

Oil reservoir capacity



Empty oil level



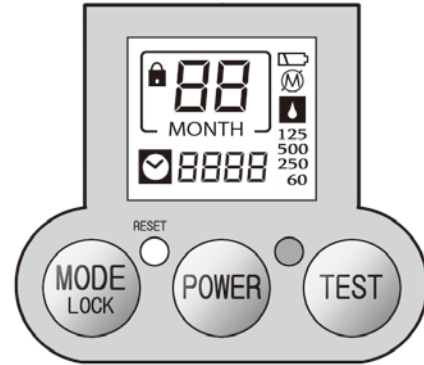
TEST mode



LED blinks when battery is low, excessive backpressure exists, or oil level is empty

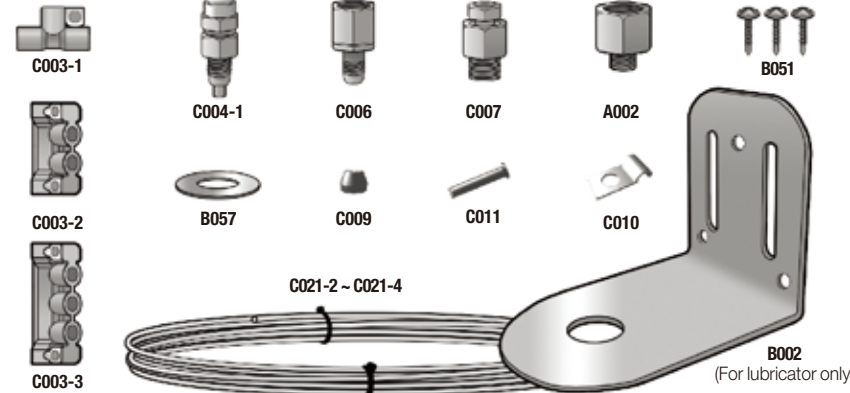


Number of days since the cycle ended (🔒 and 🔒 will also display)



Accessories for Oil Lubrication (Sold Separately)

Remote / Multi Point Installation Kits (1250RO1~4 Kits)



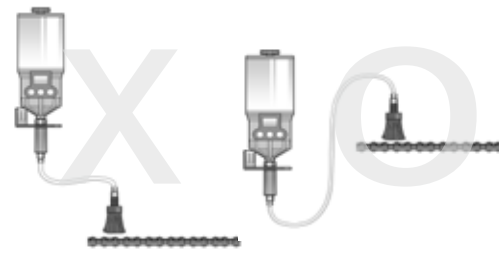
Oil Brush & Bracket Assembly

Brush Kits



1. Use OEM Pulsarlube oil kits to ensure proper lubrication
2. To download installation manuals, please visit our website at www.pulsarlube.com.
➔ Products Pulsarlube Installation Kits ➔ Oil Lubrication
3. Do not use Teflon tape on parts connected to oil distributor (Item no. C003-1~C003-3)

Note



Warning

For oils below ISO VG 100, place the oilers below the lube points and twist the lube lines a couple of times to avoid oil leaks caused by gravity.
For oils below ISO VG 100 – OL500 products should be installed below the lube points.

Shelf life and Product Warranty Warranty is limited to original defects in material and workmanship and will not cover any collateral damage due to mishandling, abuse and /or any other inappropriate use of this product. Warranty period is 1year from the date of purchase.

Rev.00

ISO9001/14001 CE

PULSARLUBE

The World Leader of Automatic Lubrication

Pulsarlube USA, Inc.

1480 Howard Street, Elk Grove Village, IL 60007, USA

TEL:1-847-593-5300 FAX:1-847-593-5303 www.pulsarlube.com / info@pulsarlube.com



PULSARLUBE

User Manual

Pulsarlube OL500

(500ml)