

Dual-function motorized pump

EGM-T

Can operate both PDI and series progressive systems by switching built-in solenoid valve.



[EGM-10T-4-4C]



[EGM-10T-4-7C]

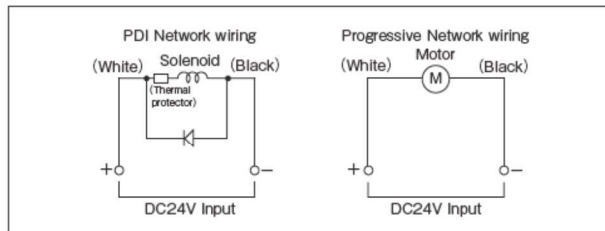
HOW to order

EGM-10T-4-□C

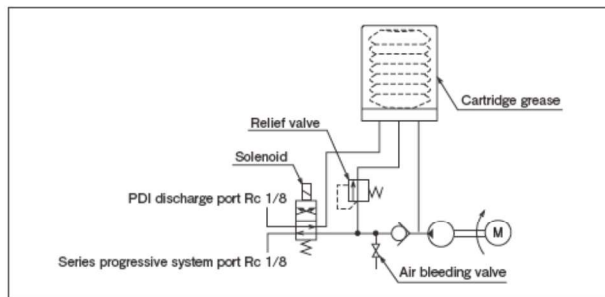
Cartridge

2	200mℓ
4	400mℓ
7	700mℓ

Wiring diagram



Hydraulic circuit drawing



Specifications

Pump	Discharge volume	10mℓ/min
	Discharge pressure	10MPa (safety valve set pressure)
Power DC24V	Motor	20W/0.8A
	Pressure relief solenoid	26W/1.1A
	Total	46W/1.9A
Pressurization	Max. ON time: 7.5 min. (PDI Port)	
Power distribution rate	Max.25% (20°C)	
Working Viscosity	Cartridge Grease No.000,00,0,1	
Recommended grease	MPO, FS2, MT1	
Cartridge size	200mℓ, 400mℓ, 700mℓ	
Weight	1.78kg (2C), 1.83kg (4C), 1.8kg (7C)	
Pressure relief	Built-in solenoid	

Directions for use

- Use recommended greases.
- Never use molybdenum disulfide-contained grease
- Use lithium greases. (Contact us for consultation when other than lithium grease is used.)
- Do not use any greases containing substances that attack brass and rubber.
- Avoid continuous operation.
- Normal operation or when filling grease into the (PDI) main tubing, please remember to adhere to the 3 to 1 ratio for off time to running time not exceeding 7.5 minutes. Failure to follow this could result in permanent damage to the solenoid not allowing the pump to ever build pressure.
- When filling grease into the (PRO) main tubing there is no limitation of time which will damage the pump. Be cautious not to grossly over lubricate your bearing surfaces.

● Related parts

MG2 metering valve : P.57	MG2C metering valve : P.57	JVPA junctions : P.58	MGI metering valve with clogged line detection : P.59	MGLA metering valve with performance monitor : P.61	GPL Pressure switch for grease : P.62	Pressure gauge : P.85	Main tubing : P.171
Adapter assemblies : P.185	LUBE original grease : P.81	SP series progressive valve : P.71	AP series progressive valve : P.71				